

*“A combination of modern and traditional elegance”*



## CITY OF BRIDGES

*“Venice is like eating an entire box of chocolate liqueurs in one go”*  
Truman Capote



# WHAT TO DO IN VENICE



Basilica di San Marco

1,4 Km Hotel Papadopoli



Palazzo dei Dogi

1,4 Km Hotel Papadopoli



Carnival



La Biennale di Venezia

3 Km Hotel Papadopoli



Historical regatta



Teatro La Fenice

3,6 Km Hotel Papadopoli



Ponte dei Sospiri

2 Km Hotel Papadopoli



Ponte di Rialto

800 m Hotel Papadopoli



La Laguna



Venice Film Festival



Peggy Guggenheim Collection

1,6 Km Hotel Papadopoli



Gondola Tour

1,3 Km Hotel Papadopoli



Mercato di Rialto



Cannaregio

1 Km Hotel Papadopoli



Redentore fireworks





## EASY ACCESS

- Few steps from Santa Lucia train station, Piazzale Roma car park, taxi, bus & Vaporetti stations and the Cruise terminal.
- Nearby the Grand Canal
- Next to Papadopoli Gardens
- Facing Tolentini's Canal



# FINEST INTERIOR DESIGN

This Hotel, has been completely renovated: each single detail has been curated by the best textile, glass and wood artisans of Venice, to create a 18<sup>th</sup> century atmosphere reinterpreted with modern elegance.

A tribute to the Venetian theater and Carnival



# LIVE LIKE A VENETIAN

Discover the “other” Venice, its secret gardens and hidden courts;  
experience the magic of a romantic journey through local flavors and  
melodies...







## BOUTIQUE HOTEL

- Unique atmosphere
- Personalised service
- Golden Keys Concierge
- Great Reputation
- Performance Score
- Gondola excursion from the own private moore





## LOBBY

- Gold, marble, Finest textiles
- Original Venetian chandeliers and mirrors
- Homely living

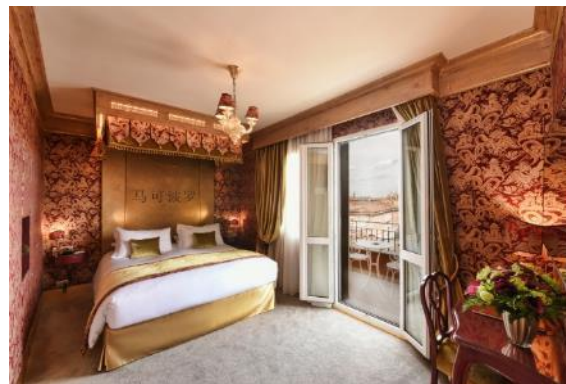






## 100 ROOMS

- 48 Superior
- 9 Superior triple
- 30 Deluxe
- 4 Deluxe triple
- 6 Deluxe Suites
- 3 Suites Executive
  
- Option: 22 twins
  
- Sofitel MyBed experience
- Large walking showers
- Fully equipped
- 100Mb Fiber Wifi
- Large Flat screen TV with a wide selection of International channels
- USB and Int.l sockets
- Kettle
- 24-hour room service



## DELUXE ROOMS

- 30 rooms (some themed)
- Canal and Garden View
- Fully equipped
- MyBed experience
- Large walking showers
- 100Mb Fiber Wifi
- Large Flat screen TV
- Kettle



## SUITE VERANDA

- Garden panoramic view
- MyBed experience
- Amenities Acqua di Parma
- Veranda jacuzzi
- Private terrace
- Nespresso machine and kettle







## SUITE VIVALDI

- Romantic atmosphere
- MyBed experience
- Bath and rain shower
- Amenities Acqua di Parma
- Water-powered fireplace
- Private terrace
- Nespresso machine and kettle





## SUITE JACQUELINE

- Fine furnitures
- MyBed Experience
- Bath
- Rain shower with view
- Amenities Acqua di Parma
- Large private terrace with outdoor jacuzzi
- Nespresso machine and kettle







## RESTAURANT

- Local cuisine
- Signature dish
- Social Events in the enchanting Winter Garden Overlooking Papadopoli's park







## BAR LOUNGE

- Cosy and bright overlooking the canal
- Outdoor terrace
- Signature drink





## MEETINGS & EVENTS

- 1 Meeting room
- Executive boards
- Trainings
- Team building
- Incentives
- Celebrations

				M <sup>2</sup>
<b>TOLENTINI</b>	25	25	3	36





## MEMORABLE MOMENT

- Discover Venice with one of the city's symbols: the gondola. The Hotel Papadopoli offers a romantic excursion just for you around the most secret corners of the City of the Doges.
- Gliding across the water, you can admire the hidden palaces, masterfully decorated facades and bridges that elegantly cross over the water.
- After this sublime escape, relax in the hotel bar and sip our signature cocktail: the Corto Maltese, a tribute to the comic-book sea captain created by Hugo Pratt.







# ACCESS & RESERVATIONS

Giardini Papadopoli - Santa Croce 245  
30135 Venice  
Italy

phone: +39 041 710 400  
e-mail: H1313-re@accor.com  
GDS: RT  
sofitel.com - accorhotels.com  
accorhotels mobile App

Follow us on:  

BY PLANE: Marco Polo international airport (15 km)  
BY TRAIN: railway station/ station 500mt  
BY CAR: Car park on demand (Piazzale Roma 210mt )  
BY TAXI BOAT or GONDOLA: own private moore  
BY VAPORETTI: Piazzale Roma station 250mt  
BY CRUISE: People mover to Cruise Terminal 100mt





Feel Welcome

---

SOFITEL  
LEGEND

**SO**  
SOFITEL

SOFITEL  
HOTELS & RESORTS

**M**  
GALLERY  
BY  
SOFITEL

pullman